

PADOC Correctional Facilities Pennsylvania



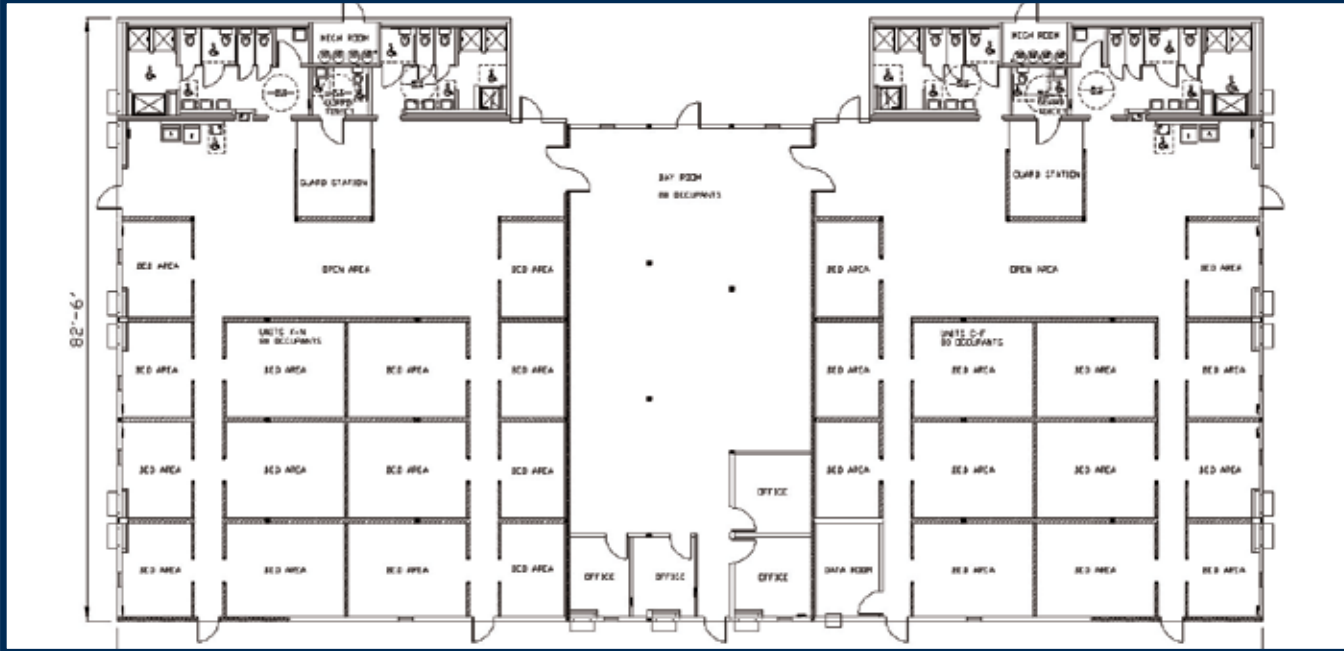
Challenge: Overcrowding at Correctional facilities in Pennsylvania prompted the PADOC to turn to modular solutions for an expedient housing solution. The facilities were at four different locations across Pennsylvania and all with varying site conditions.

Modular Solution: Vanguard Modular Building Systems furnished and installed minimal security housing facilities, totaling over 57,000 sq. ft. The four projects ran concurrently to address housing needs for 150 inmates at each of three locations: SCI-Laurel Highlands, SCI-Pinegrove, SCI-Muncy and housing for 300 at the SCI-Retreat location. Each facility consisted of double bunk dormitory style housing with individual inmate cable TV. The dormitories included full bathroom and laundry facilities with epoxy coated concrete floors for durability. Security Control Systems were located at the guard stations and full sprinkler system and climate control installed. A large, dayroom with adjacent private counseling offices were incorporated into the design.

1-877-GET-VMBS • www.vanguardmodular.com
1-877-349-9714 • www.schiavileasingcorp.com

Modular Solutions

PADOC Correctional Facilities Floorplan Pennsylvania



Project Schedule

	Laurel Highlands	Pine Gove	Retreat	Muncy
Notice of Award for first location	Apr 30, 07	Apr 30, 07-May 29, 07	Apr 30, 07-May 29, 07	Jul 25, 07
Engineering/Drawings	Apr 30, 07-May 29, 07	Apr 30, 07-May 29, 07	May 1, 07-May 30, 07	Jul 25, 07-Sep 9, 07
Permitting	Jul 16, 07-Aug 24, 07	Jul 16, 07-Aug 23, 07	Jul 16, 07-Aug 23, 07	Aug 24 07-Oct 4, 07
Site work Starts	May 29, 07-Jul 30, 07	Jul 9, 07-Aug 27, 07	Oct 1, 07-Nov 7, 07	Oct 5, 07-Nov 30, 07
Foundation Starts	Jun 25, 07-Jul 3, 07	Jul 9, 07-Jul 17, 07	Oct 4, 07-Oct 18, 07	Oct 5, 07-Oct 23, 07
Deliver Modular Building	Aug 24, 07-Aug 30, 07	Sep 10, 07-Sep 27, 07	Oct 29 07-Nov 15, 07	Nov 19, 07-Dec 4, 07
Set Modular Building	Oct 9, 07- Oct 26, 07	Nov 26, 07-Dec 7, 07	Nov 26, 07-Nov 30, 07	Dec 4, 07-Dec 7, 07
Trim out of Modulares	Oct 9, 07- Oct 26, 07	Dec 10, 07-Dec 17, 07	Dec 3, 07-Dec 18, 07	Dec 7, 07-Feb 1, 08
Utility Hookups	Oct 29, 07- Nov 5, 07	Dec 10, 07-Jan 18, 08	Dec 3, 07-Jan 11, 08	Dec 20, 07-Feb 15, 08
Substantial Completion	Dec 10, 07	Feb 15, 08	Feb 28, 08	Mar 14, 08
Occupancy	Feb 11, 08	May 6, 08	Apr 30, 08	May 2, 08
Start to Finish	286 Days	372 Days	365 Days	279 Days



Corporate Headquarters
Valleybrooke Corporate Center
100 Lindenwood Drive, Suite 200 • Malvern, PA 19355
800-448-6772 • www.vanguardmodular.com



Schiavi Leasing Corporation
102 Industrial Drive • Oxford, ME 04270
877-349-9714 • www.schiavileasingcorp.com