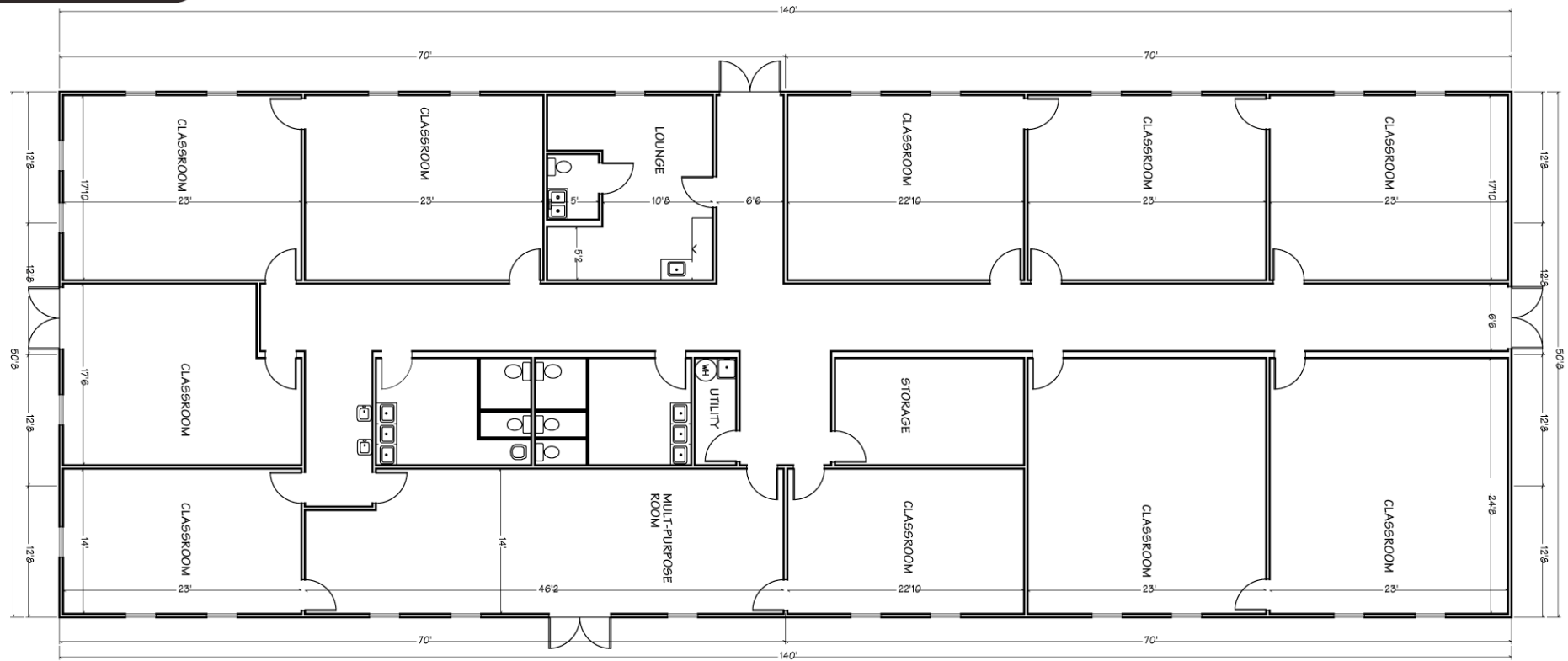


## HIGHLIGHTS

- 7,094 sq. ft.
- 10 Modular Classrooms
- Lounge
- Restrooms
- Storage and more

## CLASSROOM FLOOR PLAN/LARGE



**APPROVED CONTRACTOR**  
GSA # **GS-07F-5690R**

Corporate Headquarters  
Valleybrooke Corporate Center

100 Lindenwood Drive, Suite 200 • Malvern, PA 19355

703-349-6551 • [www.vanguardmodular\gsa.html](http://www.vanguardmodular\gsa.html) • [govbiz@vanguardmodular.com](mailto:govbiz@vanguardmodular.com)

OTHER SIZES AND  
FLOOR PLANS  
AVAILABLE

### GENERAL SPECIFICATIONS

- Meet or exceed local building codes
- Suitable for temporary or permanent use
- Customize this building to meet your space requirements