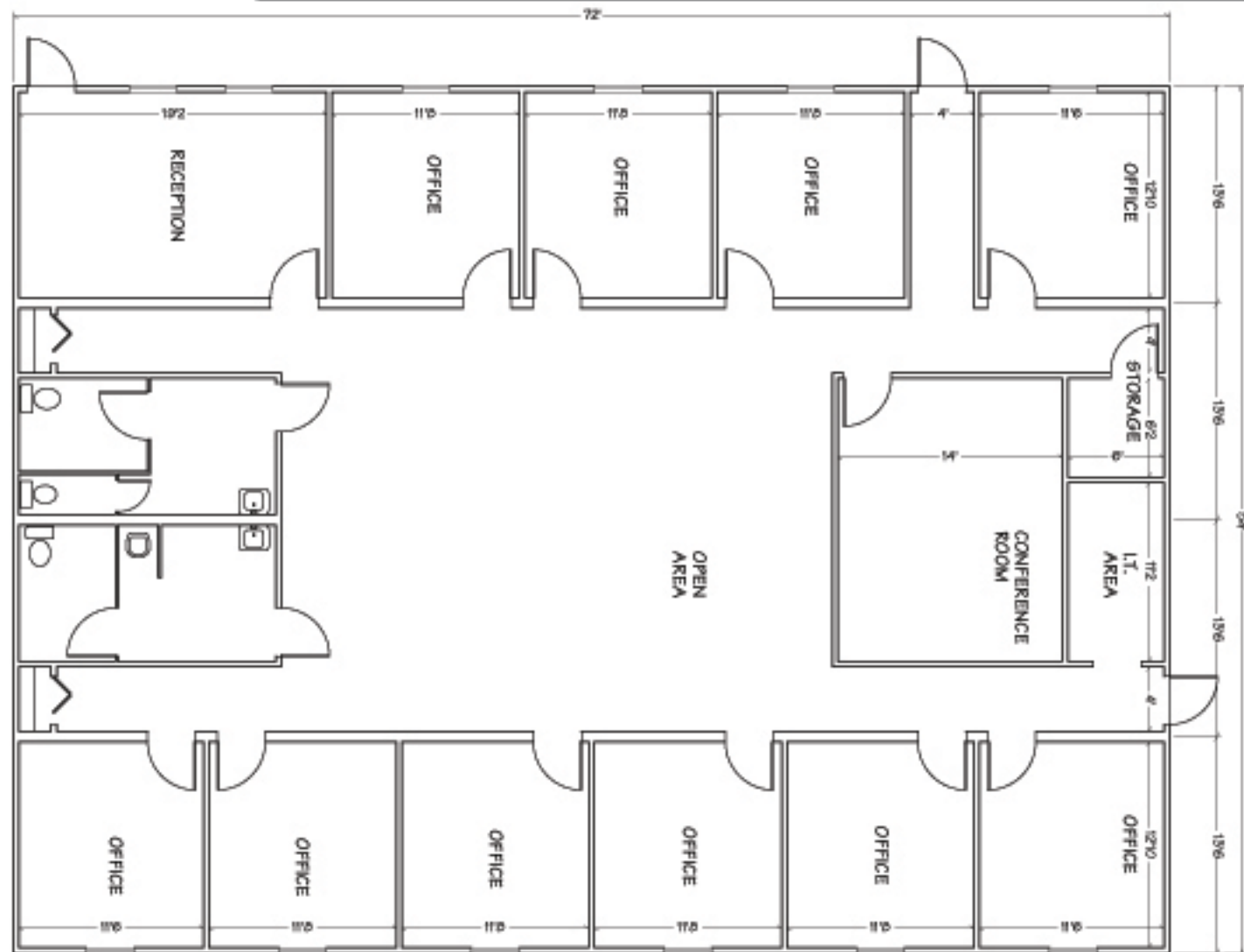


## HIGHLIGHTS

- 3,888 sq. ft.
- 10 Offices
- Conference Room
- Restrooms
- Storage
- Open Space
- Reception Area
- I.T. Area
- and more

## COMMERCIAL OFFICE FLOOR PLAN/LARGE



**VANGUARD**  
MODULAR BUILDING SYSTEMS

Corporate Headquarters  
Valleybrook Corporate Center  
100 Lindenwood Drive, Suite 200 • Malvern, PA 19366  
800-448-6772 • [www.vanguardmodular.com](http://www.vanguardmodular.com)

**SCHIAVI**  
LEASING CORPORATION

Corporate Headquarters  
102 Industrial Drive • Oshesee, NE 68420  
877-348-8714 • [www.schiarileasingcorp.com](http://www.schiarileasingcorp.com)

OTHER SIZES AND  
FLOOR PLANS  
AVAILABLE

### GENERAL SPECIFICATIONS

- Meet or exceed local building codes
- Suitable for temporary or permanent use
- Customize this building to meet your space requirements