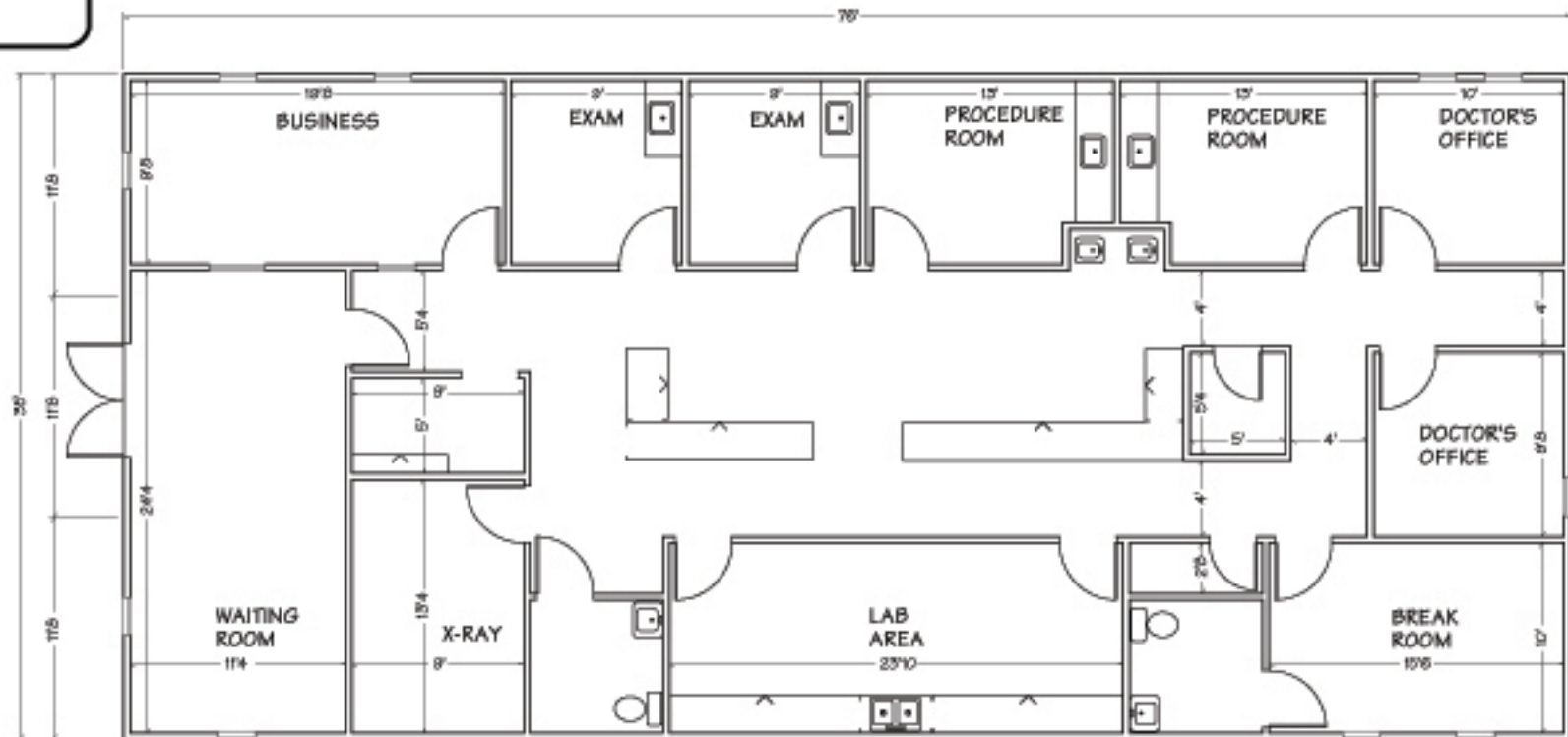


## HIGHLIGHTS

- 2,660 sq. ft.
- 2 Offices
- 2 Exam Rooms
- Laboratory
- 2 Procedure Areas
- Restrooms
- Storage  
and more

## MEDICAL OFFICE FLOOR PLAN/LARGE



**VANGUARD**  
MODULAR BUILDING SYSTEMS

Corporate Headquarters  
Valleybrook Corporate Center  
100 Underwood Drive, Suite 200 • Malvern, PA 19366  
800-448-8772 • [www.vanguardmodular.com](http://www.vanguardmodular.com)

**SCHIAVI**  
LEASING CORPORATION

Corporate Headquarters  
102 Industrial Drive • Oxford, NE 68427  
877-348-8714 • [www.schiavileasingcorp.com](http://www.schiavileasingcorp.com)

OTHER SIZES AND  
FLOOR PLANS  
AVAILABLE

### GENERAL SPECIFICATIONS

- Meet or exceed local building codes
- Suitable for temporary or permanent use
- Customize this building to meet your space requirements