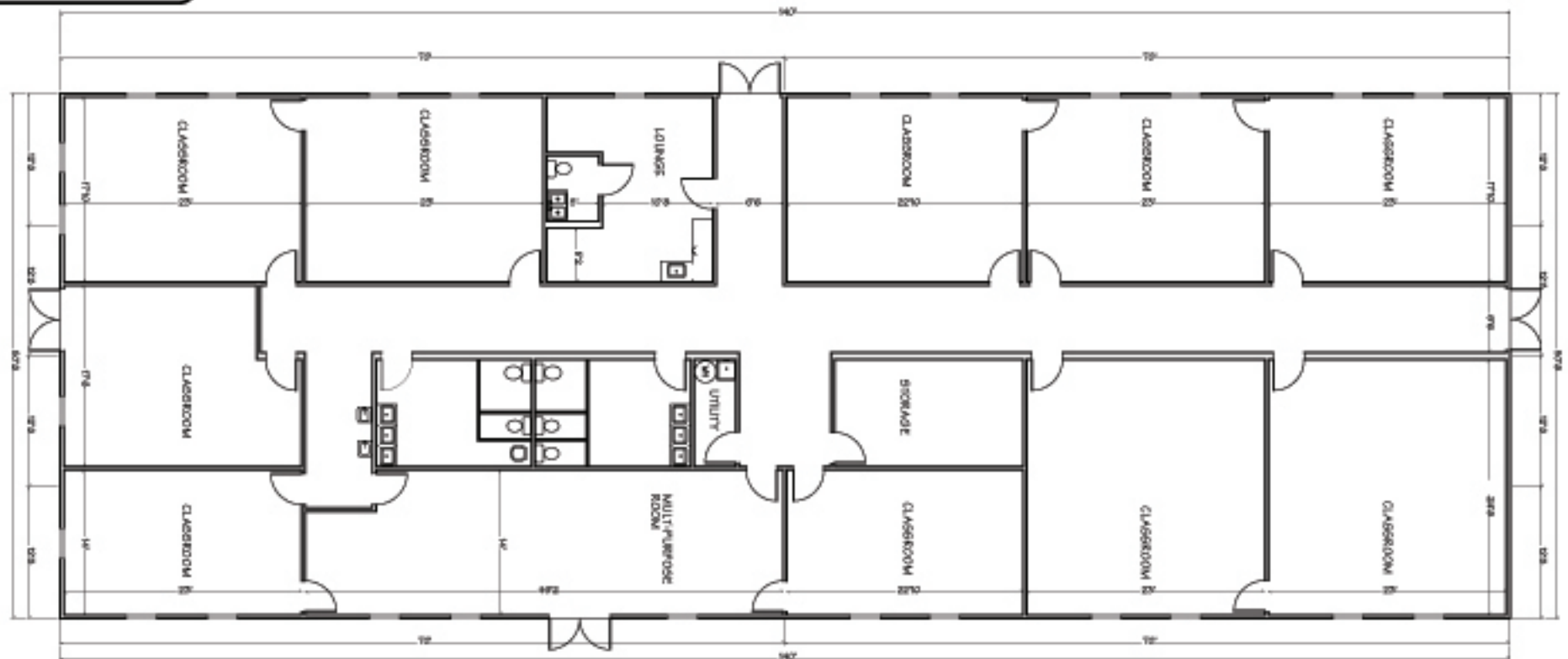


HIGHLIGHTS

- 7,094 sq. ft.
- 10 Modular Classrooms
- Lounge
- Restrooms
- Storage
and more

CLASSROOM FLOOR PLAN/LARGE



VANGUARD
MODULAR BUILDING SYSTEMS

Corporate Headquarters
Valleybrook Corporate Center
100 Lindenwood Drive, Suite 200 • Malvern, PA 19366
800-448-6772 • www.vanguardmodular.com

SCHIAVI
LEASING CORPORATION

Corporate Headquarters
102 Industrial Drive • Oxford, ME 04270
877-348-8714 • www.schiavileasingcorp.com

OTHER SIZES AND
FLOOR PLANS
AVAILABLE

GENERAL SPECIFICATIONS

- Meet or exceed local building codes
- Suitable for temporary or permanent use
- Customize this building to meet your space requirements